

US Composting Council 2011 – San Jose

Residential Route Monitoring: A Case Study

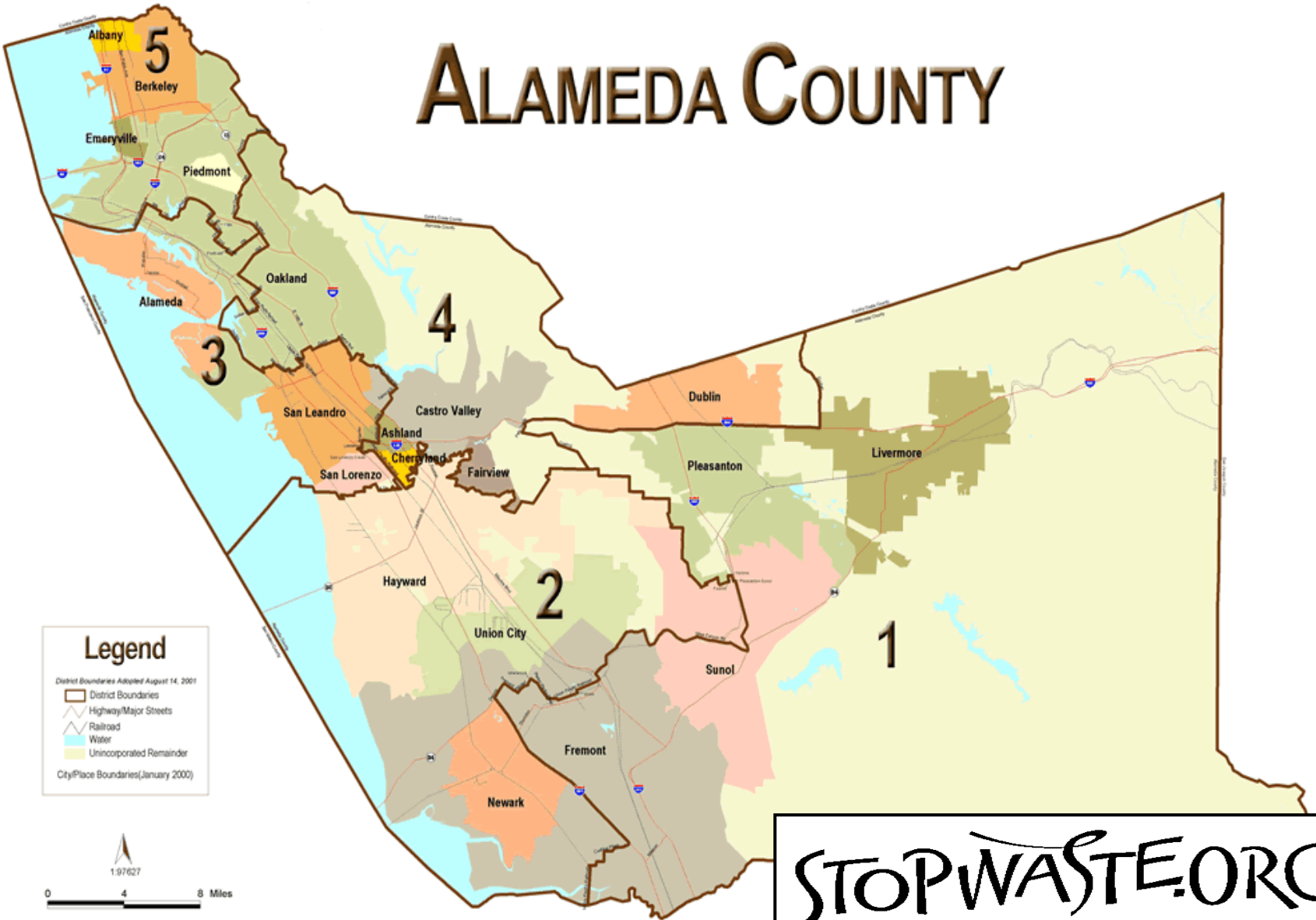
Brian Mathews

Senior Program Manager

Alameda Co. Waste Management Authority

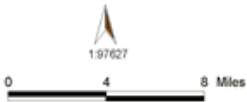


ALAMEDA COUNTY



Legend

- District Boundaries Adopted August 14, 2001
- District Boundaries
- Highway/Major Streets
- Railroad
- Water
- Unincorporated Remainder
- City/Place Boundaries (January 2000)



STOPWASTE.ORG
Reducing the Waste Stream for Alameda County

What is Route Monitoring

= The collection of a data which is statistically valid and representative of the demographic mix of the community.

Why Route Monitoring

- Cost Effectiveness
- Participation
- Diversion Calculation
- Message Testing
- Enforcement

RFID Route Monitoring

- Customer Service
- Cart Servicing
- Accurate Billing
- Tracking Cart Placement
- Weight Measurement



Website



Hangtags



Ads/Posters



Bill Inserts

Things We've Tried

- Free Compost coupons
- Raffle for Free Garbage Service

FOOD SCRAP RECYCLING REWARDS

You've Hit Pay Dirt!

You've been awarded a FREE bag of compost!

San Leandro's Food Scrap Collection Program has been a big success thanks to you! That's why we'd like to thank you by providing you with a sample of the fruits (vegetables, meat, pasta, etc.) of your labor — a free bag of high-quality compost. Use in your yard or on houseplants and watch them thrive. Please see coupon below for details, or call 510-577-6026 if you have questions.

Funded by a grant from the Alameda County Waste Management Authority

FREE BAG OF COMPOST

BRING THIS COUPON TO:
 Evergreen Nursery, 350 San Leandro Blvd., San Leandro to pick up your free bag of compost. For nursery hours call 510-632-1522.

ENTER TO WIN!
 Fill out this coupon to enter a drawing for one free year of trash collection.* Good luck!

Name _____
 Address _____
 Phone Day _____ Evening _____
 Email _____

I am willing to be interviewed by a representative of the City regarding what I like about the food scrap recycling program. Yes No

*Existing level of service only. Only residents within the Alameda County Industries service area are eligible.

Printed on Recycled Paper

FOOD SCRAP RECYCLING REWARDS

SORRY!

YOU DID NOT RECEIVE A COUPON FOR FREE COMPOST, BUT ...

HERE'S HOW TO GET A SECOND CHANCE:

Because there were no food scraps or food-soiled paper visible in your green cart, we could not give you a Recycling Reward. But we will be back in your neighborhood, so start recycling food scraps and you'll be eligible to receive a coupon for **FREE COMPOST** and a chance to **WIN A YEAR OF FREE GARBAGE COLLECTION SERVICE!**

The City and ACI now process food, food-soiled paper and yard trimmings into a rich compost that can be used in gardens and on farms. By recycling food scraps, we reduce the amount of garbage going to landfill, and help grow healthy food for our families.

See reverse for more information on the food scrap program, or call (510) 577-6026.

Printed on Recycled Paper



City News

SUMMER 2010 | ISSUE 51

FREMONT BULLETIN



Are you Fremont's
top recycler?
Ready, Set, Recycle is
your chance to prove
it and win!



KPIX 5 Story





▶ cbs5.com

EYEWITNESS NEWS

How To Monitor –Lid Flipping

- Get up Early
- Coordinate with Hauler
- Select Representative Routes
- Choose Sample Size
- Safety, Safety, Safety

Auditing



Address	Garbage Cart Info		Total Garbage wt	Result % Recy and Organics in Garbage	Garbage in Garbage				Recy In Garbage				Organics in Garbage				Recy Cart	FS in Grn Cr	Route Day	Sort Day	Recy Cart size
	Size	% full			# of Buckets	Total wt.	Net wt.	%	# of Buckets	Total Wt.	Net wt.	%	# of Buckets	Total Wt.	Net wt.	%					
7276 Thames Ct.	32	20%	12.4	81.5%	1	3.8	2.3	19%	1	4.8	3.3	27%	1	8.3	6.8	55%	80%	Y	28-Jun	19-Jul	96
5453 Eaglebrook Terr	32	20%	2.9	27.6%	1	3.6	2.1	72%	1	1.6	0.1	3%	1	2.2	0.7	24%	50%	Y	2-Jul	23-Jul	64
8015 Via Zapata	32	30%	5.9	91.5%	1	2	0.5	8%	1	4.8	3.3	56%	1	3.6	2.1	36%	60%	Y	30-Jun	21-Jul	64
11773 Bloomington	32	40%	12.7	81.9%	1	3.8	2.3	18%	1	1.8	0.3	2%	1	11.6	10.1	80%	60%	?	30-Jun	21-Jul	64
8280 Cardiff Dr	32	50%	10.6	82.1%	1	3.4	1.9	18%	1	2.4	0.9	8%	2	10.8	7.8	74%	60%	Y	1-Jul	22-Jul	64
7887 Peppertree	32	60%	10.8	55.6%	2	7.8	4.8	44%	1	2.6	1.1	10%	1	6.4	4.9	45%	70%	?	29-Jun	20-Jul	64

Winning Carts

Dublin	Total Garbage wt (in lbs)	% Good Stuff in Garbage	% Garbage	% Recyclable	% Compostable	FS in Grn Crt?
Monday Winner	11.5	24%	76%	0%	24%	Y
Tuesday Winner	9.4	25%	76%	0%	24%	Y
Wednesday Winner	14.3	41%	59%	3%	37%	Y
Thursday Winner	37	26%	74%	6%	20%	?
Friday Winner	18.1	13%	87%	5%	8%	Y
Fremont						
Monday Winner	52.5	69%	31%	17%	51%	Y
Tuesday Winner	11	14%	86%	9%	5%	?
Wednesday Winner	1	0.0%	100%	0%	0%	Y
Thursday Winner	7	57%	43%	0%	57%	Y
Friday Winner	3.5	14%	86%	0%	14%	Y

Participation in Residential Food Scrap Programs
Results of 2009 Audits - Alameda County Jurisdictions

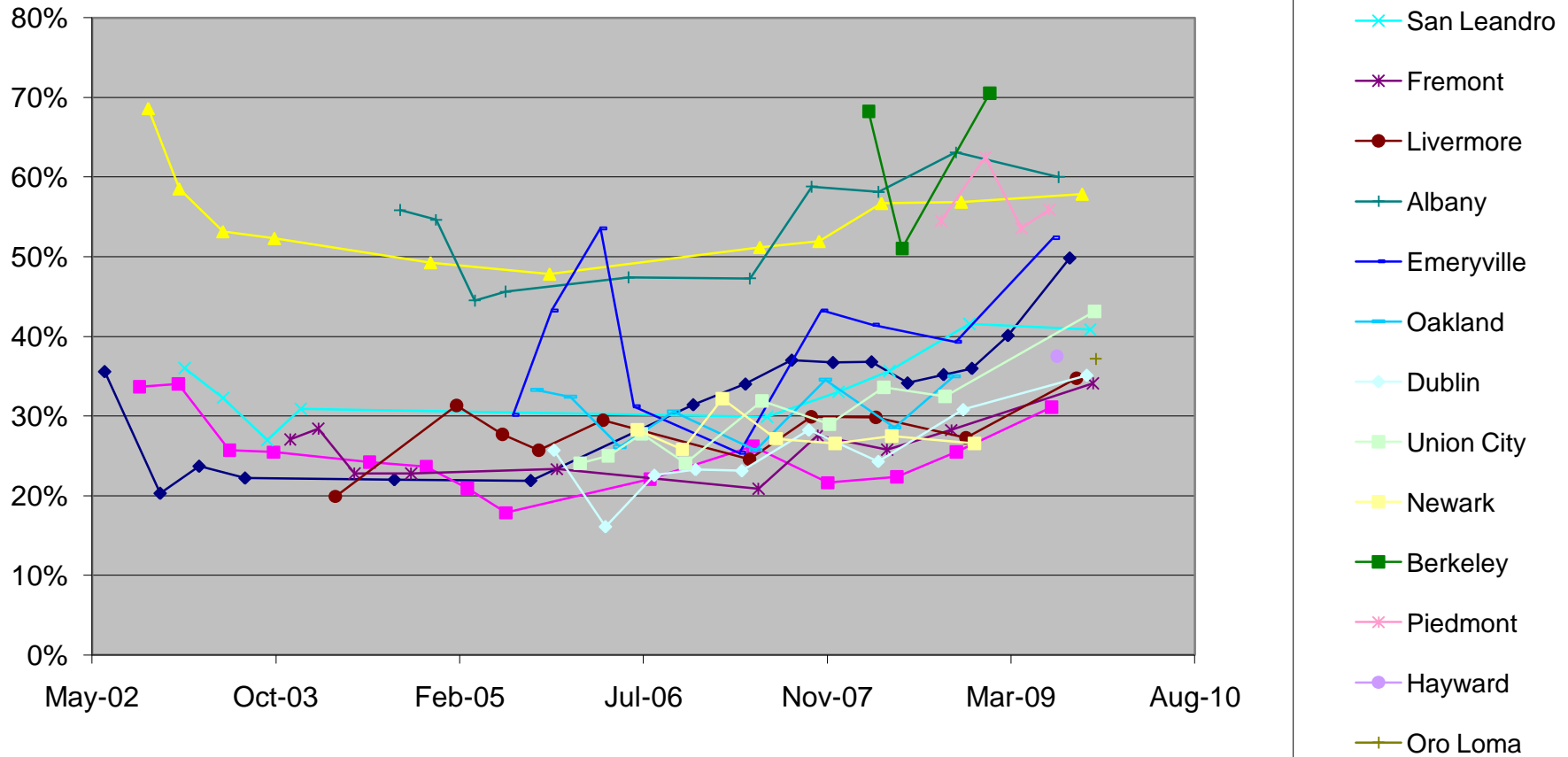
Jurisdiction	Audit Time Period	Average Participation Rate for Houses with				Contamination ⁴ per Green Cart (%)
		Any Cart Setout ¹		Green Cart Setout ²		
		Unadjusted (percent)	Adjusted ³ (percent)	Unadjusted (percent)	Adjusted ³ (percent)	
Alameda	Oct 2009	39.4	44.6	57.9	65.4	11.2
Albany	Aug 2009	38.4	43.4	60.0	67.8	7.2
Berkeley	Jan 2009	47.2	47.2	70.5	70.5	3.9
Castro Valley	Mar, Sept 2009	25.4	28.7	45.0	50.8	9.7
Dublin	Oct 2009	20.6	23.3	35.1	39.7	11.0
Emeryville	July 2009	21.4	24.2	52.4	59.2	14.3
Fremont	Nov 2009	22.7	25.6	34.1	38.5	7.8
Hayward	Aug 2009	20.3	22.9	37.5	42.4	12.9
Livermore	Sept 2009	22.3	25.2	34.7	39.2	8.4
Newark	May, Dec 2008	14.1	15.9	27.0	30.5	8.3
Piedmont	July 2009	51.7	51.7	55.9	55.9	4.4
Pleasanton	July 2009	21.5	24.3	31.1	35.1	5.4
Oakland	May, Nov 2008	14.2	16.0	31.8	35.9	11.7
Oro Loma	Oct 2009	21.1	23.8	37.2	42.0	9.6
San Leandro	Oct 2009	21.3	24.0	40.9	46.2	13.6
Union City	Nov 2009	19.0	21.4	43.2	48.8	13.5
Average for All Jurisdictions		26.3	28.9	43.4	48.0	9.6

Additional Studies

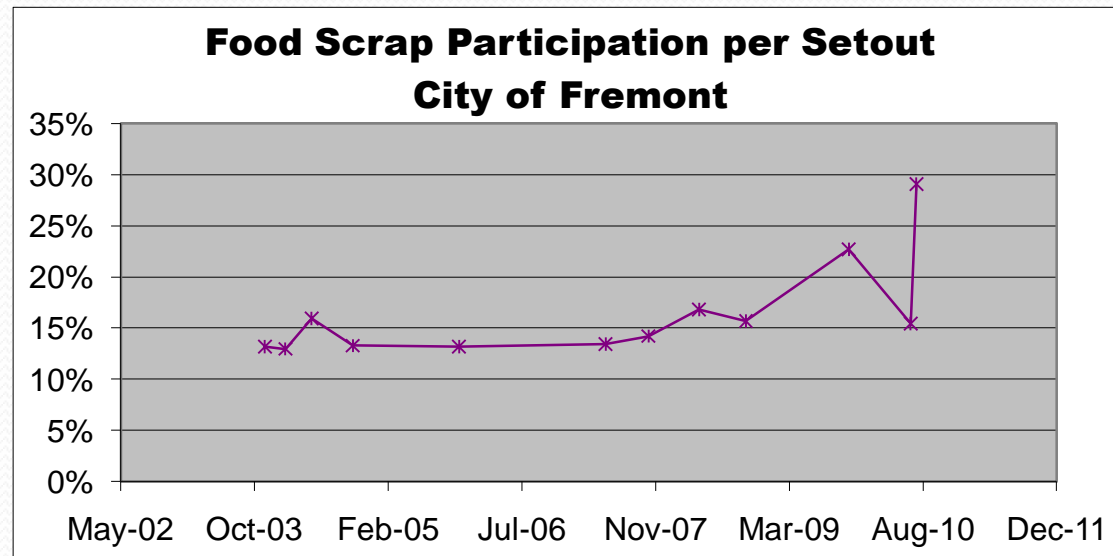
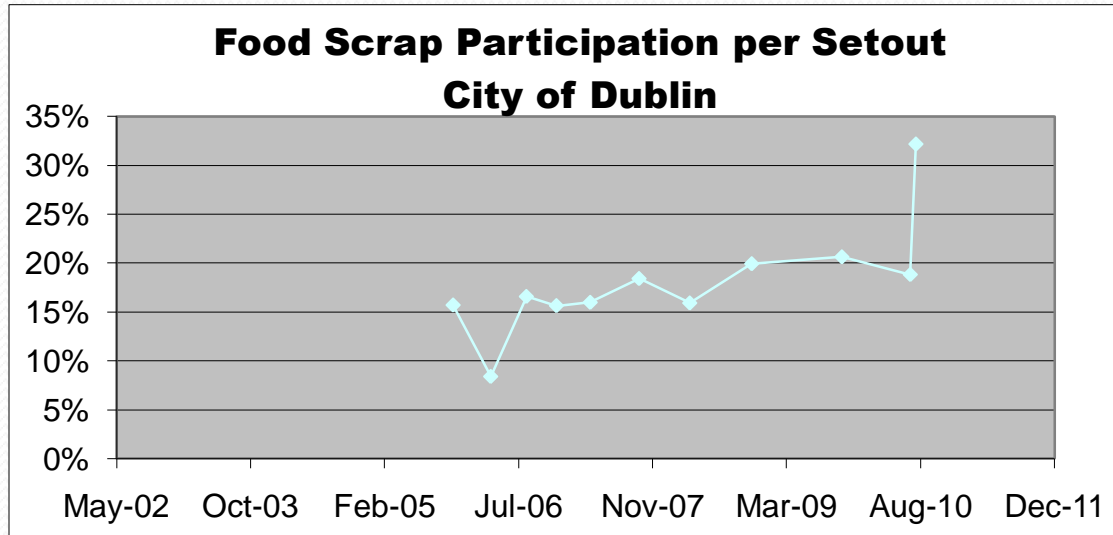
- 10 lbs/household
- What's Buried underneath
 - 13⁰% adjustment factor
- Set-out Frequency
 - 17⁰% never, 17⁰% always, 66⁰% 1-3 /month

Results

Food Scrap Participation per Green Cart Setout



Results



Lessons/Considerations

- Garbage Cart are Full
 - 32 gal 70% full
 - 64 gal 65% Full
- Recycling Carts -- are 65% Full
 - Fremont 39% are 90-100% full
 - Dublin 43% are 90-100% full

Contact

Brian Mathews

Senior Program Manager

(510) 891-6518

bmathews@stopwaste.org

STOPWASTE.ORG
Reducing the Waste Stream for Alameda County