

# ROT IS HOT!

Compost Critters that lunch on  
your leftovers...& more!

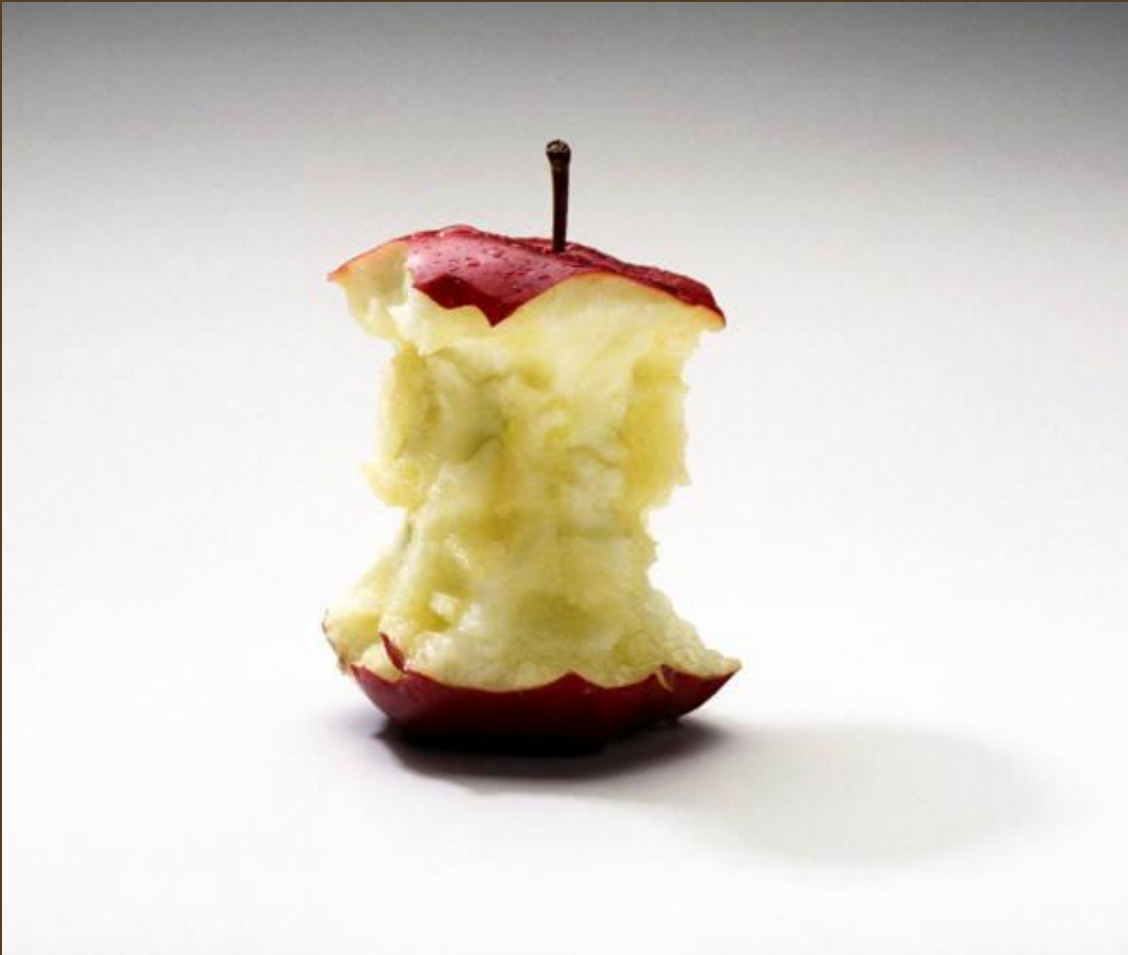
# The 4 “Rs”

**REDUCE**

**REUSE**

**Recycle**

**Rot**



# Where is all the trash going?







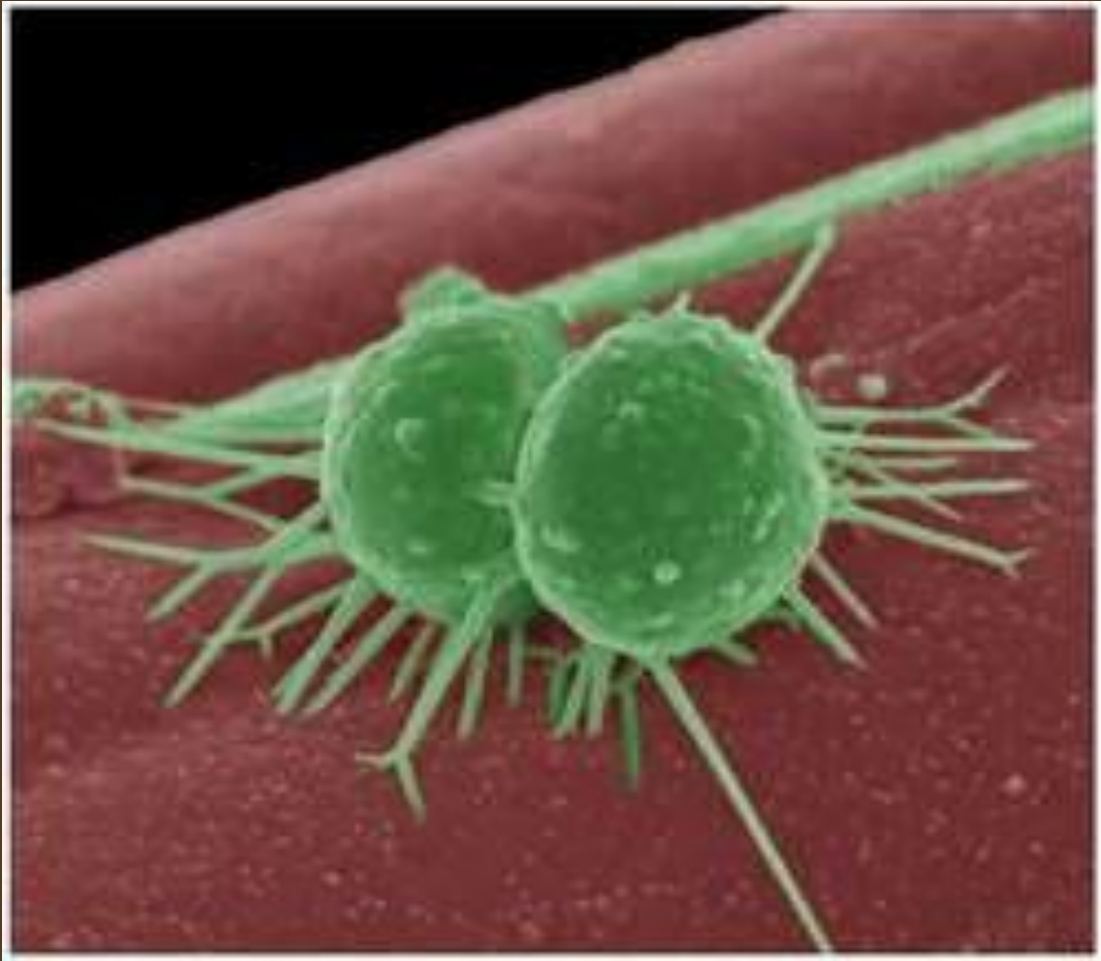


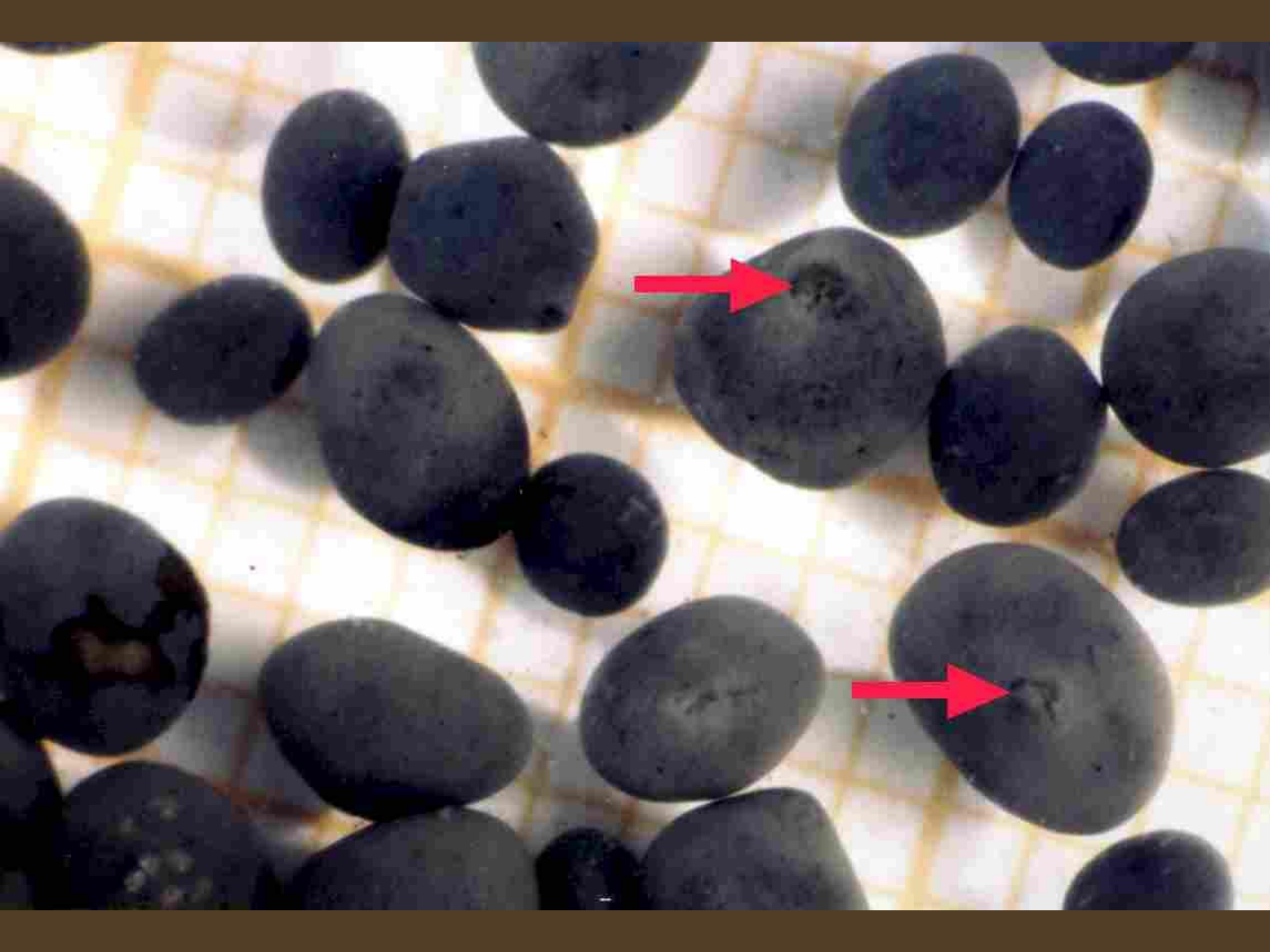
Superhaul  
202-475-0800













# Leaking Leachate



# Paper Plates



**20  
years  
old**

# Carrots



**10  
years  
old**

# Hot Dogs

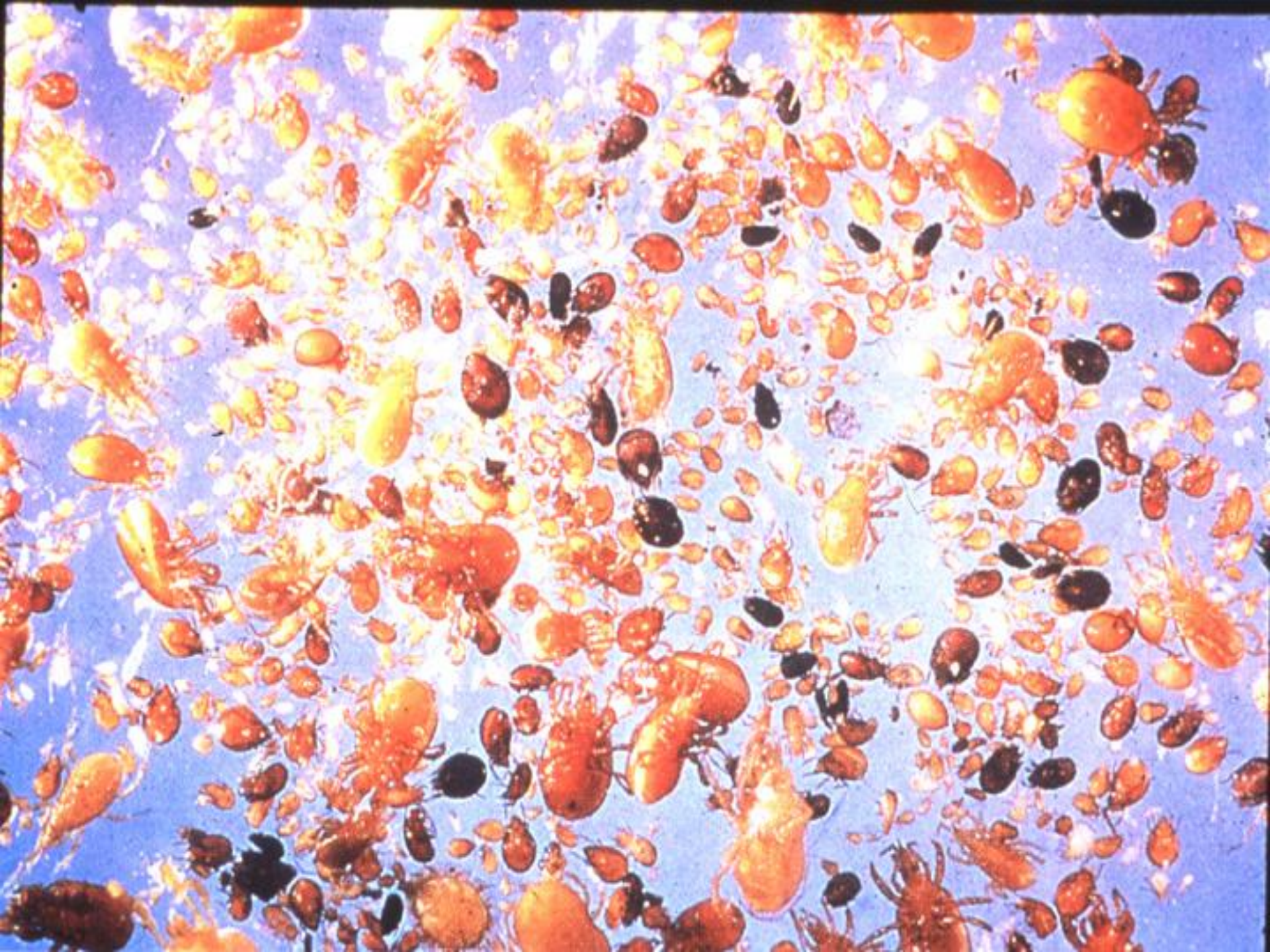


10  
years  
old

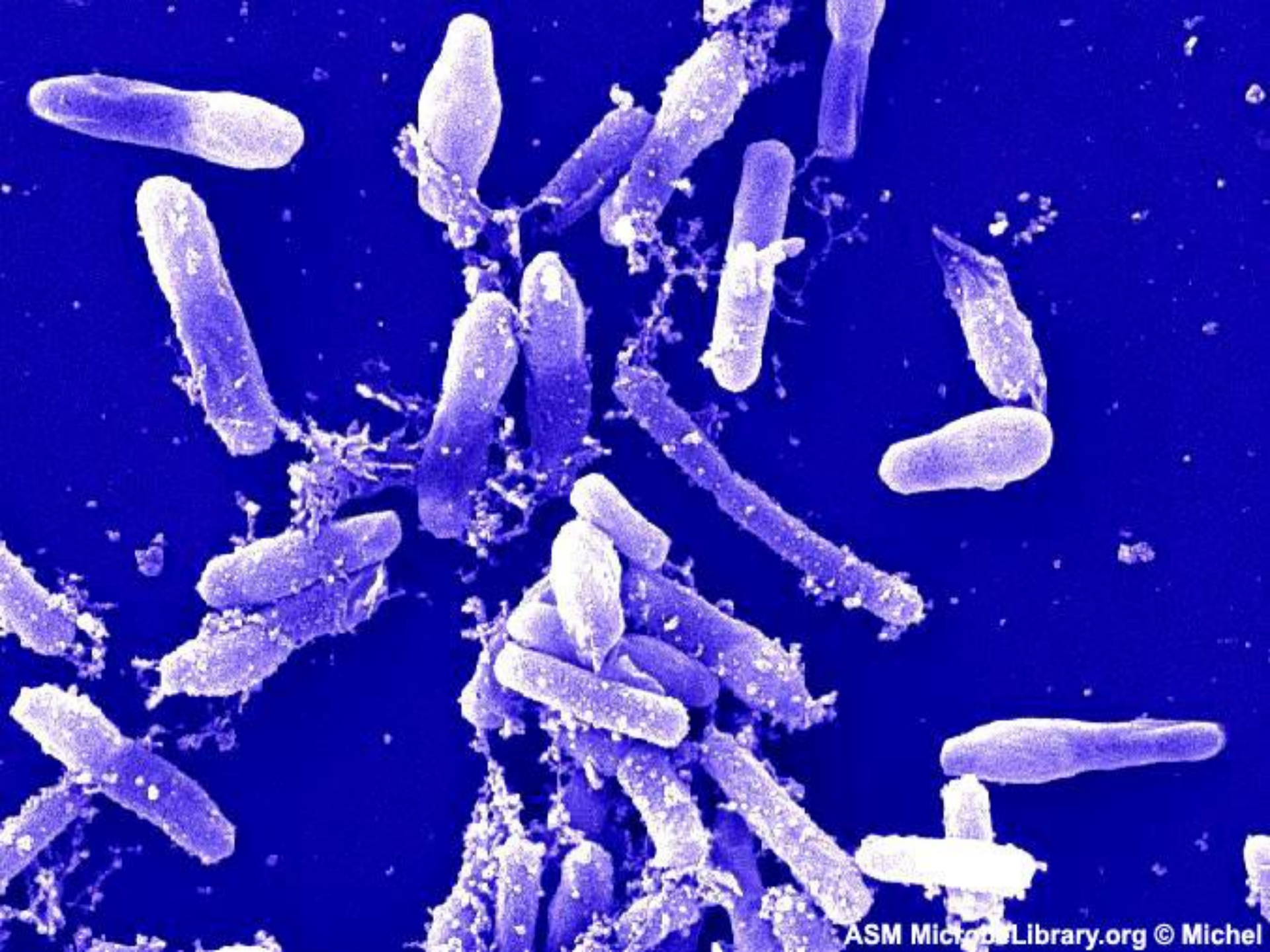


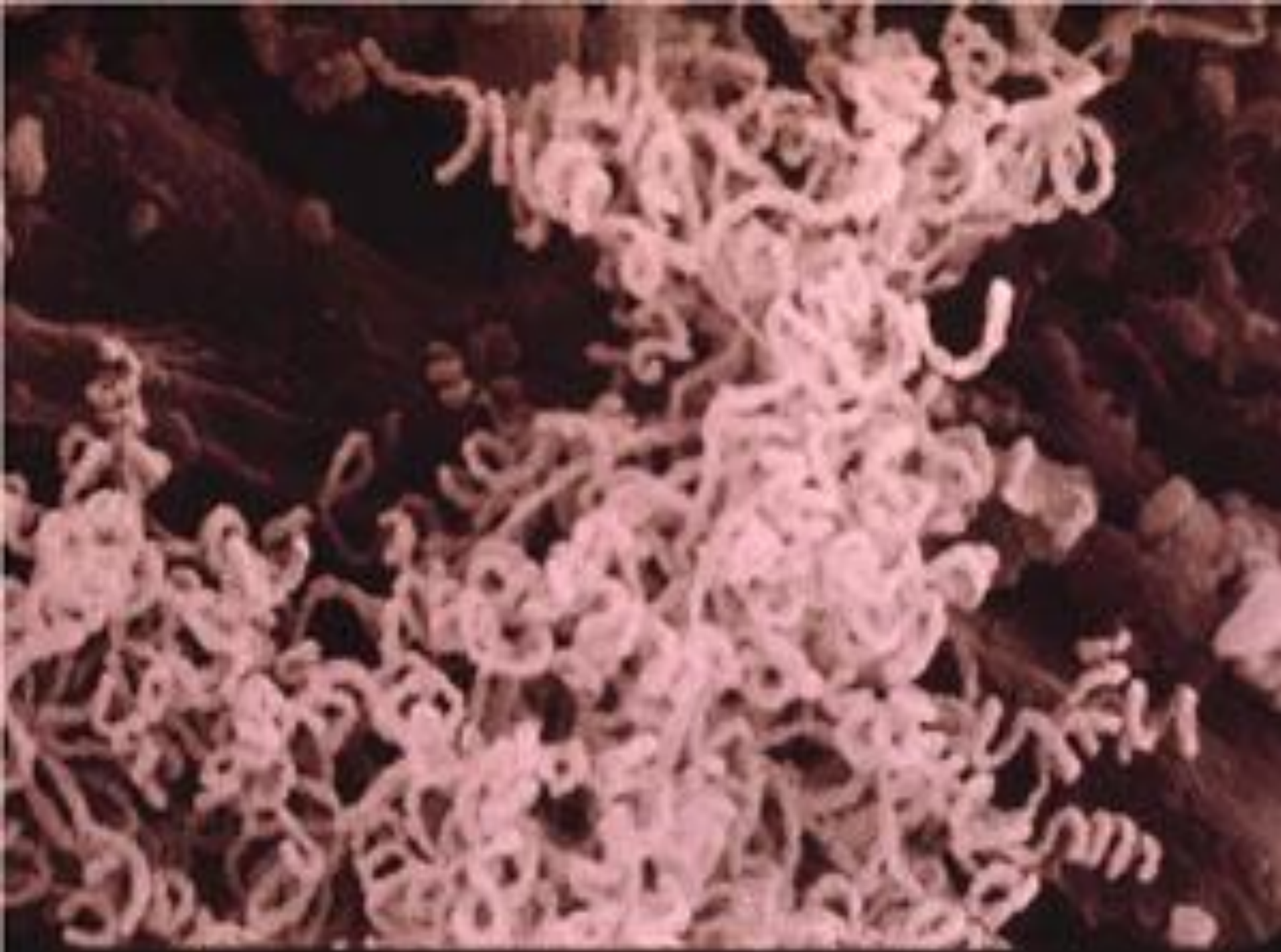




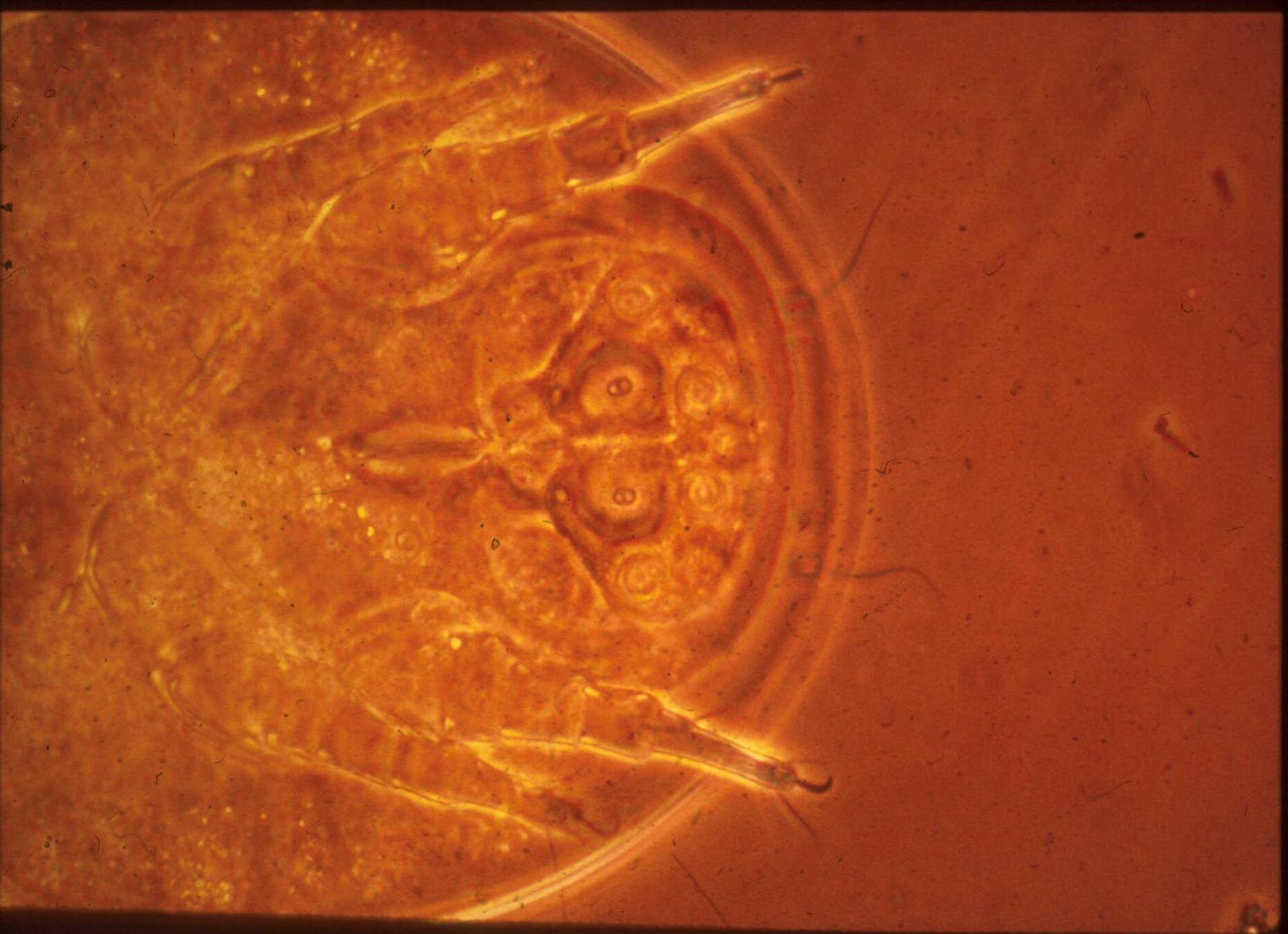




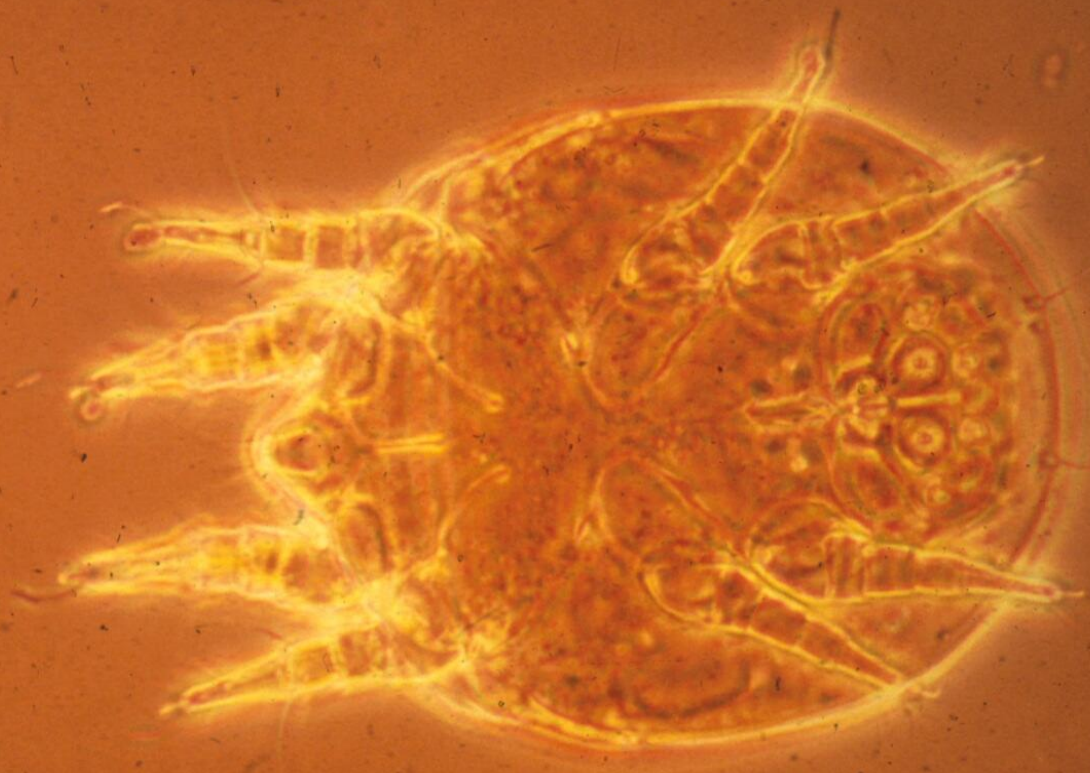






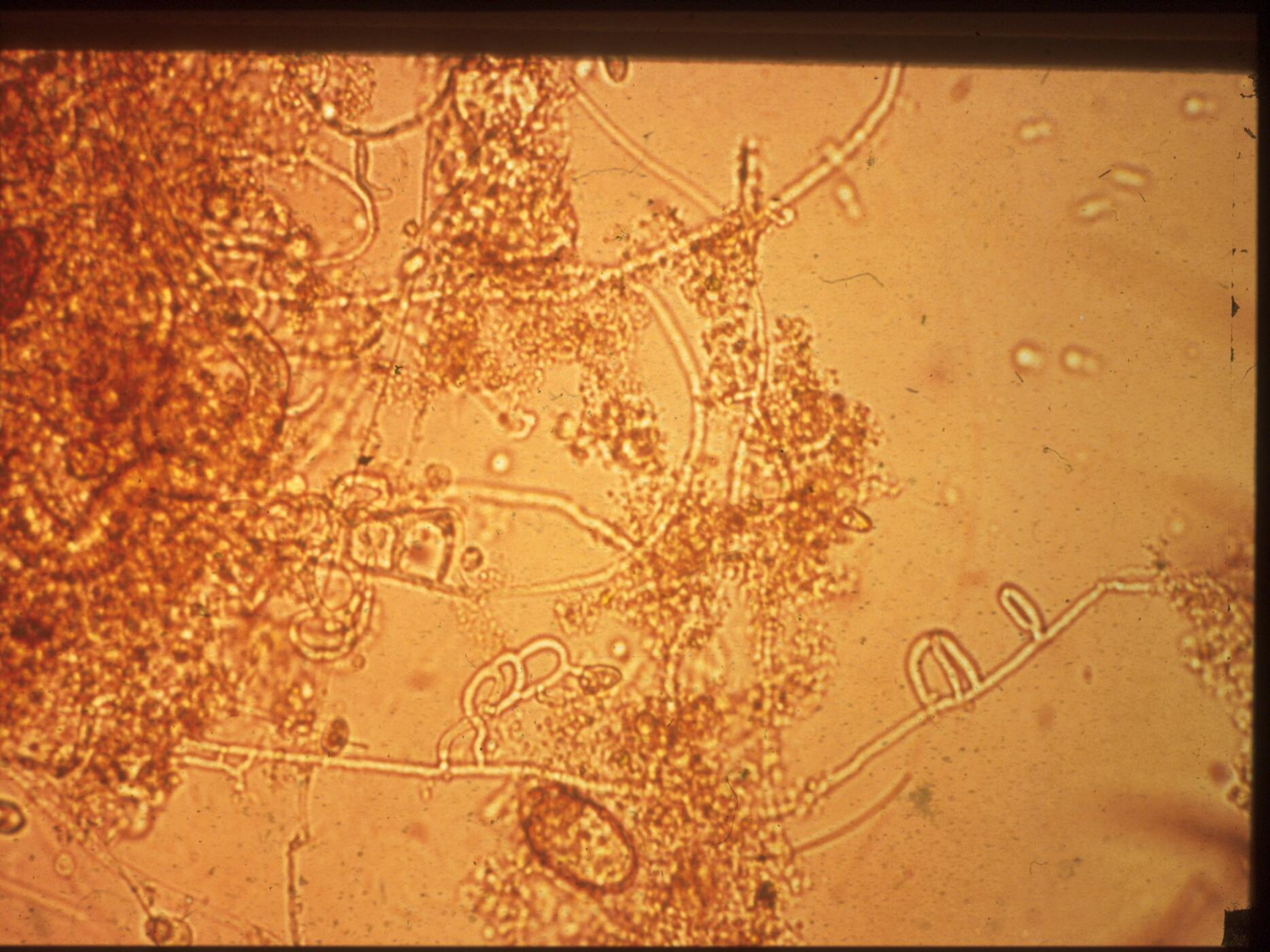




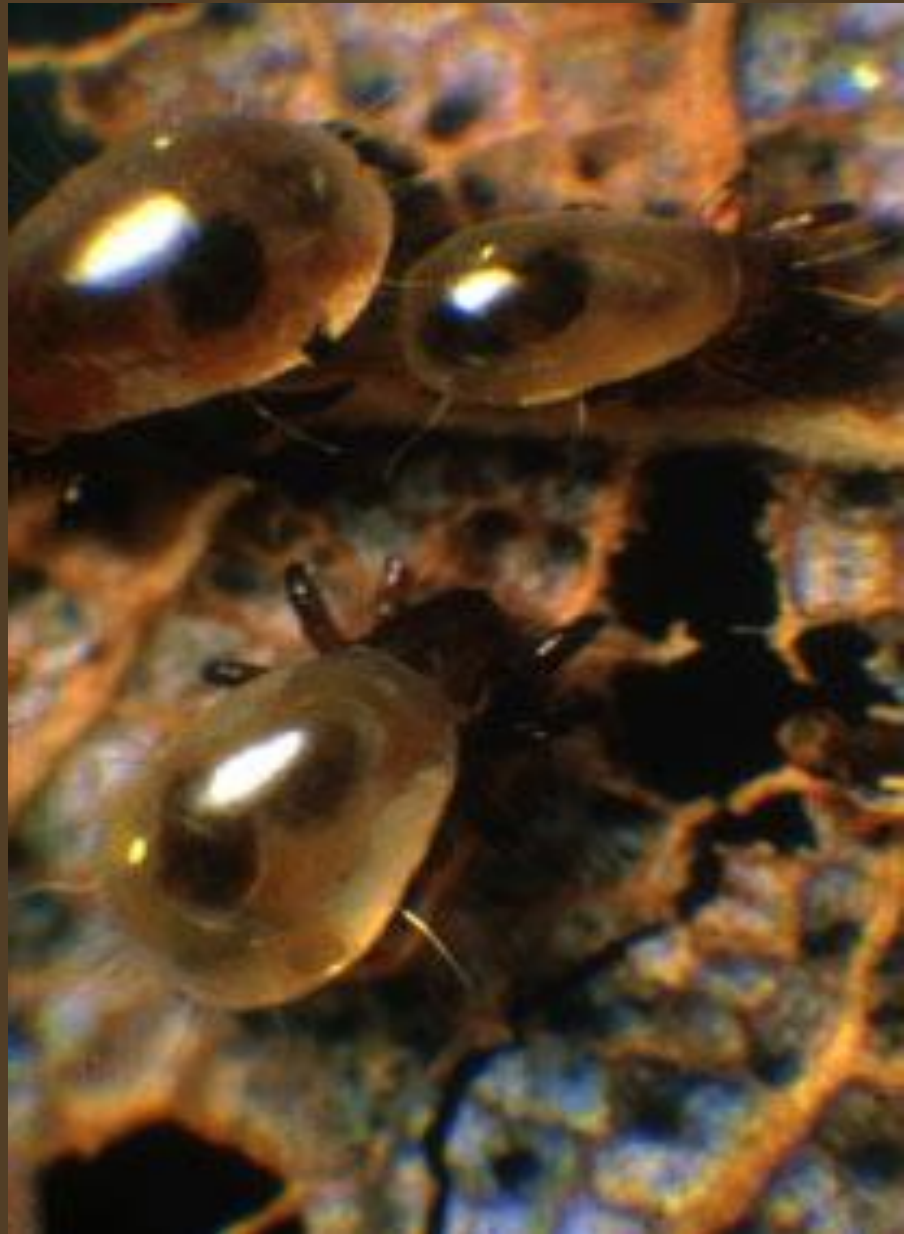




























# What is composting?



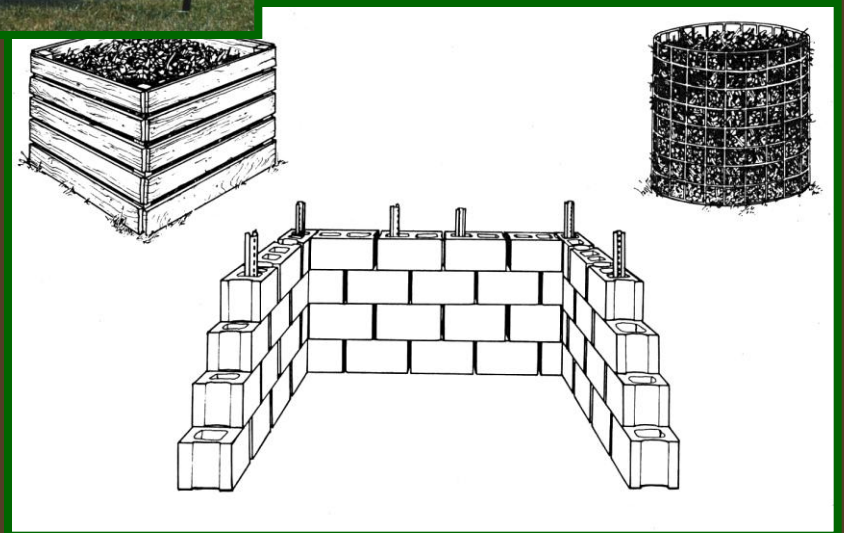
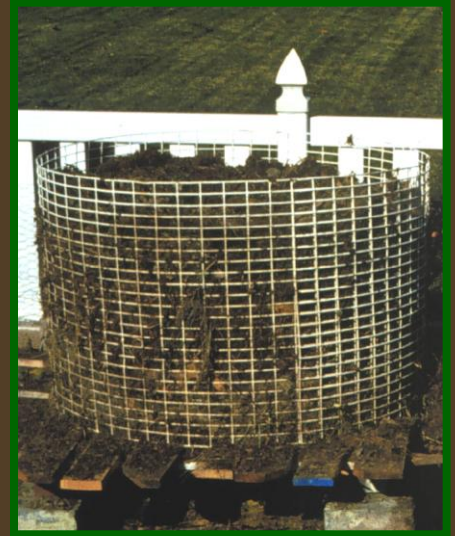
Speeding up the natural process of decay to change organic materials into a valuable humus-like material called compost !



**Compost**



# Bin/pile construction



# Where do the decomposers come from?

If you build it,  
they will come...

- Soil
- Leaves
- Food scraps
- Manure, and
- Finished compost

Each of these will add

Microorganisms

to the compost pile.





# What do they need to live?

- AIR
- WATER
- BROWN STUFF TO EAT
- GREEN STUFF TO EAT

# Browns

High carbon materials such as

- Leaves
- Straw
- Dried plant material
- Paper
- Paper napkins
- Paper plates
- Paper towels
- Paper tubes



# Greens

High nitrogen materials such as

- Vegetable scraps
- Fruit scraps or rotted fruit
- Coffee grounds & filters
- Tea bags
- Egg shells
- Stale food-cereal, crackers
- Grass clippings
- Fresh plant material



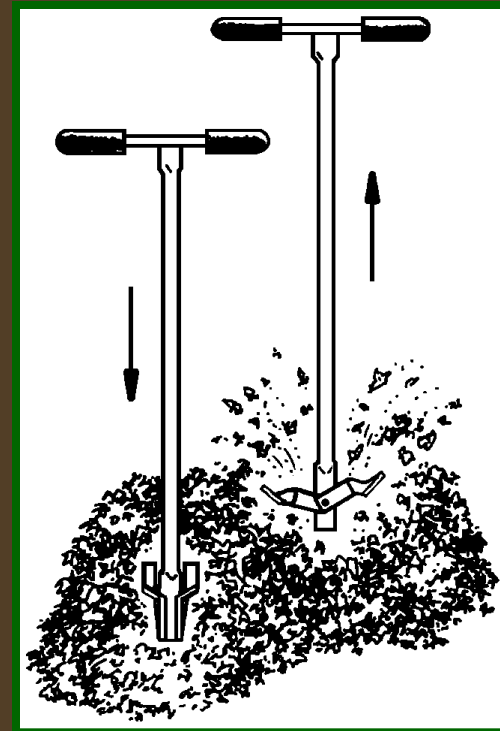
# Some things to leave OUT



# How do you add AIR to your compost pile?



**Turning the pile  
mixes fresh air into the pile**



**Turning tools  
may make the job easier**

# WATER! We all need it!

**Fast decomposing requires WATER !**

**If TOO DRY, bacterial activity will slow or cease! They move around on the water.**

**If TOO WET, loss of air in the pile will bring on STINKY bacteria that don't need air!**

- The pile should be *as wet as a wrung out sponge*
- If too dry, add water as you turn the pile
- If too wet, add browns and/or turn the pile



# When is it finished?

- Pile shrunk/no heat
- Dark brown
- Crumbly, loose
- Smells earthy
- No chunks



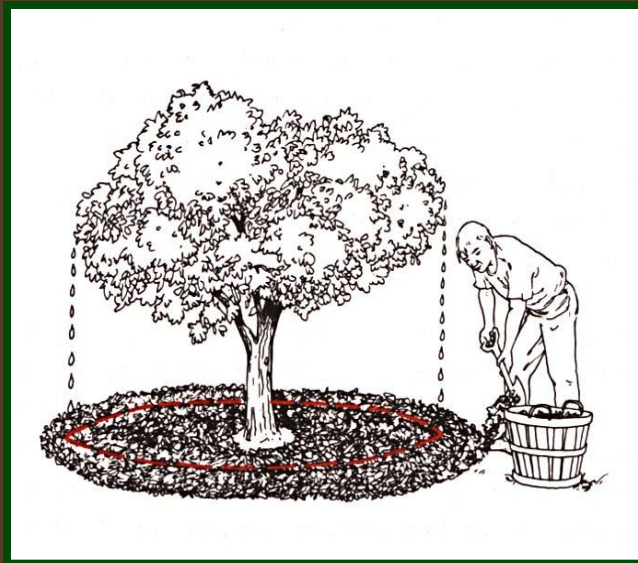
One teaspoon of good garden soil  
with compost added has:

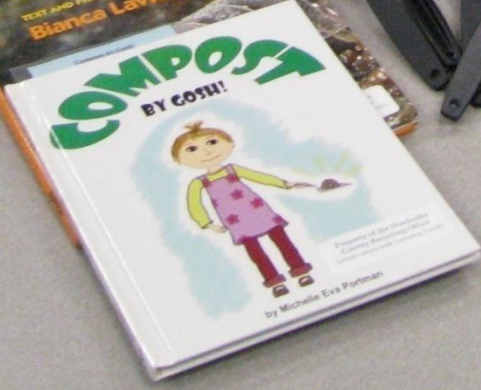
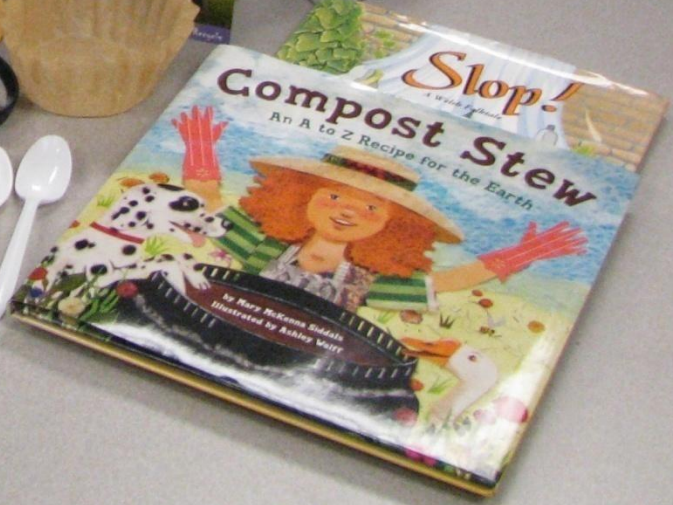
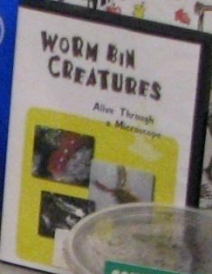
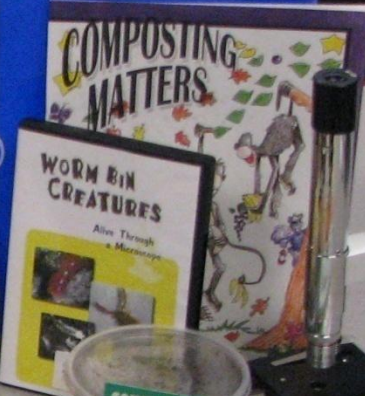
- 100 million bacteria
- 800 feet of fungal threads





# How do I use the compost?







Be Resourceful  
**COMPOST**  
COMPOSTING COUNCIL

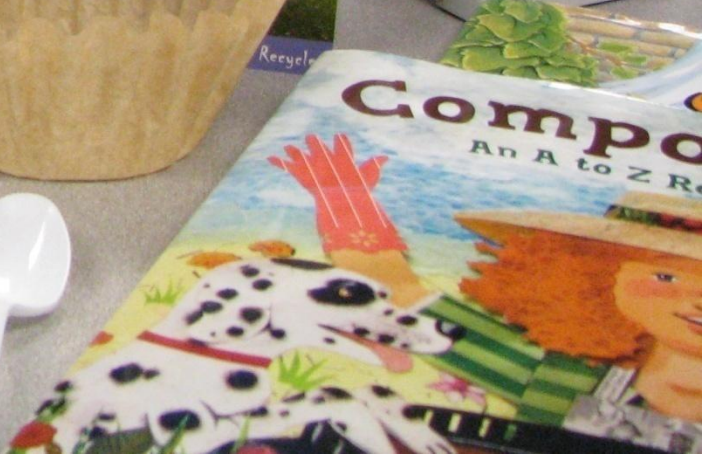
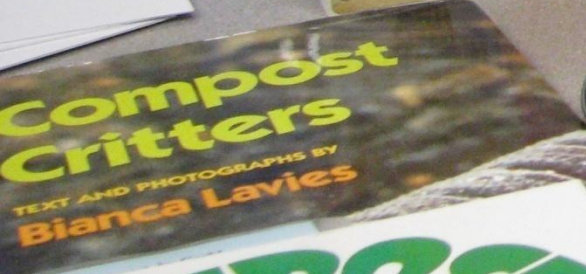
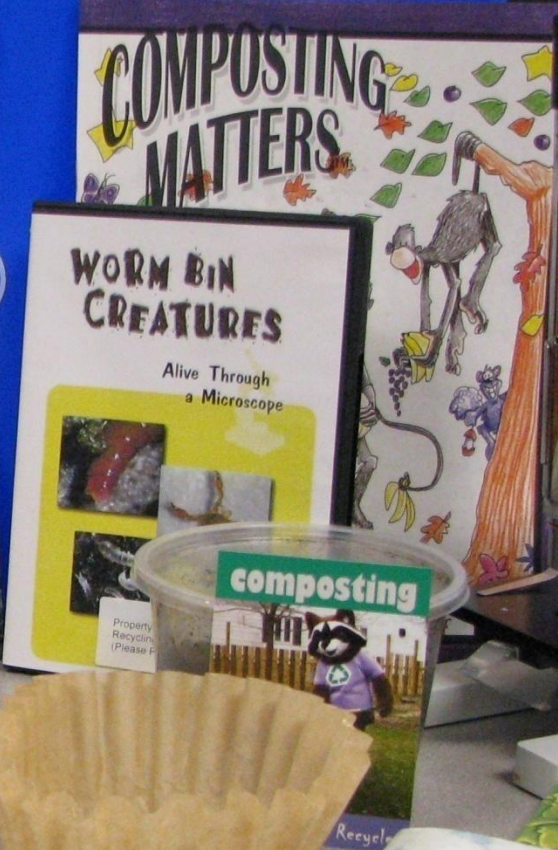
**COMPOSTING MATTERS**  
**WORM BIN CREATURES**  
Alive Through a Microscope

**Compost Critters**  
BY BIANCA LAVIN  
**Play Compost Gini!**  
BY CORI

**Slow!**  
An A to Z Recipe for the Earth  
BY RUBY MCKENNA EMMETT  
ILLUSTRATED BY ASHLEY WATTS

**WHEELER**  
FOR THE USE & OUTLET

composting









Retzer Nature Center  
is proud to present ...

# Home Composting

Discovery Tour and Field Lab



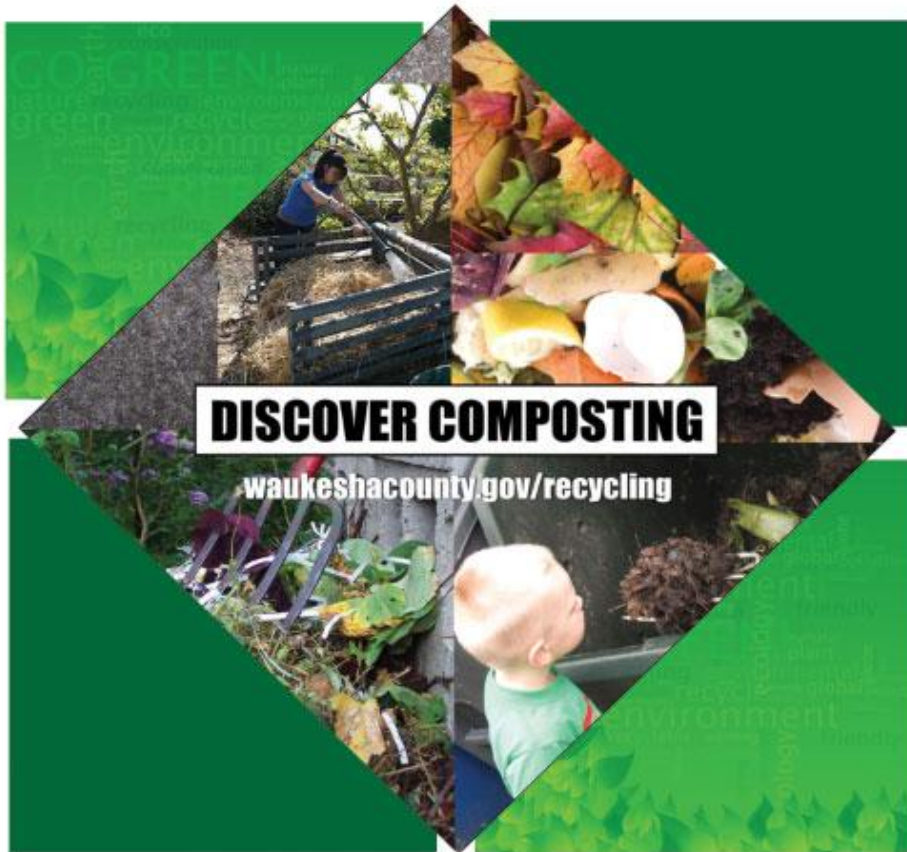
[www.waukeshacounty.gov](http://www.waukeshacounty.gov)









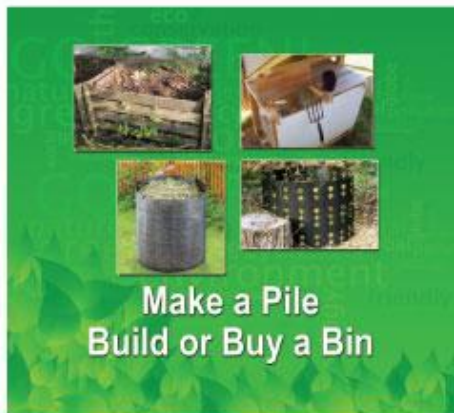


# DISCOVER COMPOSTING

[waukeshacounty.gov/recycling](http://waukeshacounty.gov/recycling)



Add Yard & Food Trimmings



Make a Pile  
Build or Buy a Bin



Turn Pile, Add Water



Use It To Amend Soils

# Ridgeline™

The Ridgeline is an effective message or branding carrier and a super outdoor space definer that can be used to attract attention at any indoor and outdoor event.



Ridgeline is very compact and portable when unassembled. An ideal display in all kinds of environments. It's unique spring construction allows the product to virtually unfold itself once you take it out of the bag. Putting it back together is done in a few easy steps - it does not get any easier than that.

#### **Applications:**

- Corporate outings
- Space definition
- Sporting events
- Directional signage
- High traffic areas
- Any outdoor or indoor venue

#### **Benefits:**

- Unique spring construction
- Simple message change
- User-friendly design
- Ideal for many environments
- 360 degree visibility

#### **Features:**

- Easily transported and stored
- Unique shape that attracts attention
- Easy assembly - no tools required
- Universal usage - indoor and outdoor
- Includes six stakes for stability





**WAUKESHA  
COUNTY  
RECYCLES**



## **Meribeth Sullivan, Recycling Specialist**

msullivan@waukeshacounty.gov 262-896-8317

www.waukeshacounty.gov/recycling twitter.com/enedspecialist

<http://www.arow-online.org/organicgroup.html>