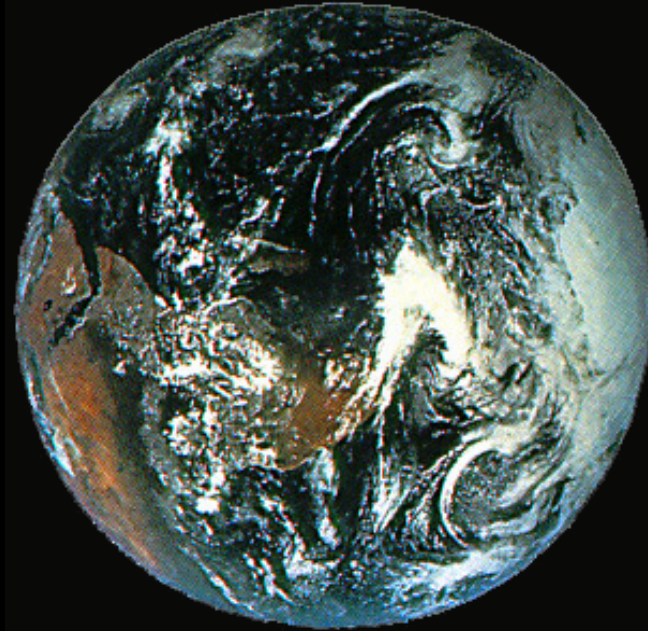
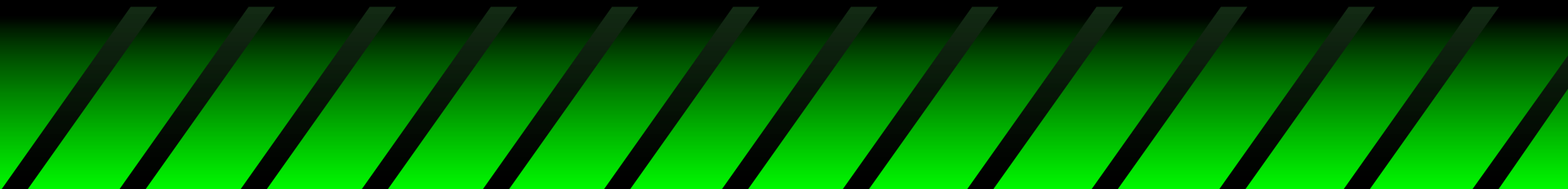




Green Mountain Technologies



Composting in a Big Apple High Rise





75 Battery Place, New York, NY

mhb@compostingtechnology.com

Get directions My places

75 Battery Pl
New York, NY 10280



Directions Search nearby Save to map more

Explore this area

Photos



Places

Skyscraper Museum
Museum of Jewish Heritage



It's here.
Google Maps
for iPhone®

Get the app

Maps Labs - Help

Google Maps - ©2013 Google - Terms of Use - Privacy



Green Mountain Technologies

Overview of Presentation

- History of Battery Park City (a LEED Leader)
- Formation of BPCPC to Maintain parks
- BPCPC used Earth Tub for first 10 years
- Construction of the new headquarters
- Integration of the Earth Flow inside operations building
- Evolution of zero pesticide and fertilizer use
- How the food and yard waste is collected and processed
- Conclusions



Green Mountain Technologies

The History of Battery Park City

Battery Park City is a 92-acre (0.37 km²) planned community at the southwestern tip of Lower Manhattan in New York City. The land upon which it stands was created by land reclamation on the Hudson River using 1.2 million cubic yards of soil and rocks excavated during the construction of the World Trade Center and certain other construction projects, as well as from sand dredged from New York Harbor off Staten Island.^[1] The neighborhood is the site of the World Financial Center which houses the headquarters of Merrill Lynch and Goldman Sachs. There are several thousand high-end residential units in more than 20 buildings along the development.



Green Mountain Technologies

The Conservancy



- ◆ Independent of NYC Parks
- ◆ Staff of over 20 horticulturists
- ◆ Has environmental mandate
- ◆ Installed Earth Tubs in 1999
- ◆ Uses Cushman electric carts
Provides food waste collection



Green Mountain Technologies

Earth Tub Used in In-Door Settings



Green Mountain Technologies

New Headquarters completed in 2009



- ◆ New 35 Story LEED Certified Tower
- ◆ BPCPC Occupies first 4 Floors
- ◆ Upper floors sold as luxury Condo's
- ◆ Within ¼ Mile of world Trade Center



Green Mountain Technologies



Green Mountain Technologies

In-Door Maintenance and Operations



Green Mountain Technologies

Integrating Composting into Service Garage



- ◆ Composting in bays
- ◆ All clippings brought here in carts
- ◆ Grinding for yard debris
- ◆ Soil blending hopper
- ◆ Composter behind roll doors



Green Mountain Technologies

BPCPC Space Constraints

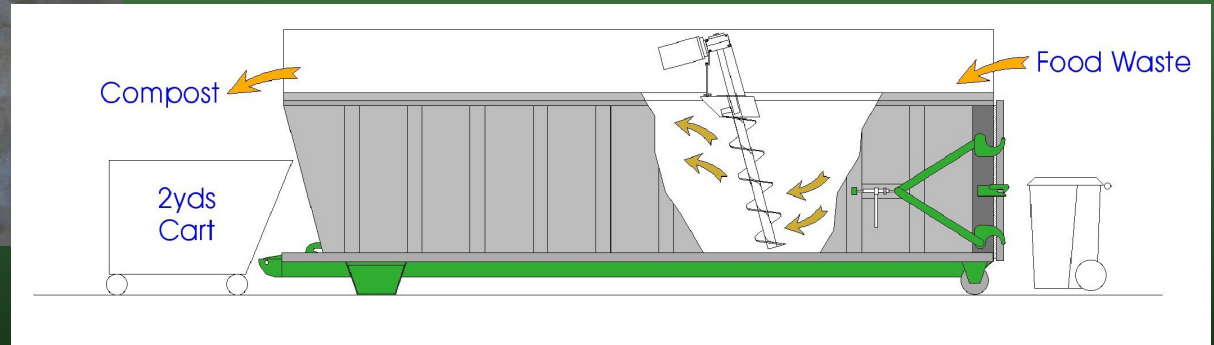


Green Mountain Technologies

Earth Flow Process



- ◆ Plug Flow Process
- ◆ Yard waste ground
- ◆ All material is hand loaded in 30 gallon trash cans



Green Mountain Technologies

How the Earth Flow Composts

- ◆ The food cooks and softens in the hot compost mix
- ◆ Mixing blends the cooked food onto the bulking material
- ◆ Will handle most biodegradable plates and cups w/o grinding



Green Mountain Technologies

Odor Control Design



- ◆ Three Tier Strategy
- ◆ Clean operation
- ◆ Biofiltration of vessel headspace
- ◆ Ventilation of room air to roof thru stack



Green Mountain Technologies

Battery Park City Parks



- ◆ Heavily used waterfront access
- ◆ Organically Managed
- ◆ Compost used as fertilizer replacement
- ◆ Compost Teas for disease management



Green Mountain Technologies

Food Waste Generation



- ◆ Restaurants
- ◆ Small Markets
- ◆ Gristedes Supermarket
- ◆ Selective collection
- ◆ Not collecting all waste



Green Mountain Technologies

Impacts of Super Storm Sandy



Green Mountain Technologies

Conclusions

- ◆ Green Roofs and Urban Farming will drive up demand for inner city composting
- ◆ Installing a composter in a building can increase the probability of success when properly designed
- ◆ High Rise buildings are already designed for venting sewer stack gases



Green Mountain Technologies