

George Jordan

Compost Collection Services

- USCC – January 2013





AgRecycle was founded in 1991 and operates multiple composting sites in western Pennsylvania

Pennsylvania's Composting General Permit allows us to accept **source-separated**:

- Yard Debris
- Clean Wood Waste
- Manures (and bedding)
- Paper
- All food residuals (including proteins and bones)
- Non-biosolid liquids
- Green building materials
- Corrugated/wax corrugated
- Approved compostable products

Understanding the background circumstance from which we operate:

- No landfill bans in Pennsylvania for organics
- Regulatory climate very friendly to traditional waste industries
- Landfill tipping fees in western Pennsylvania are in the bottom 20% for the United States
- *As such, we face different economic considerations than many of our counterparts around the country.*

AgRecycle operates large scale composting facilities serving food customers in these commercial sectors:

- Serving
 - Food processors
 - Supermarkets
 - Restaurants
 - Universities/Schools
 - Professional sports stadiums
 - Pittsburgh Convention Center
 - Corporate cafeterias
 - Public venues
 - Special events
 - Museums

NORDSTROM

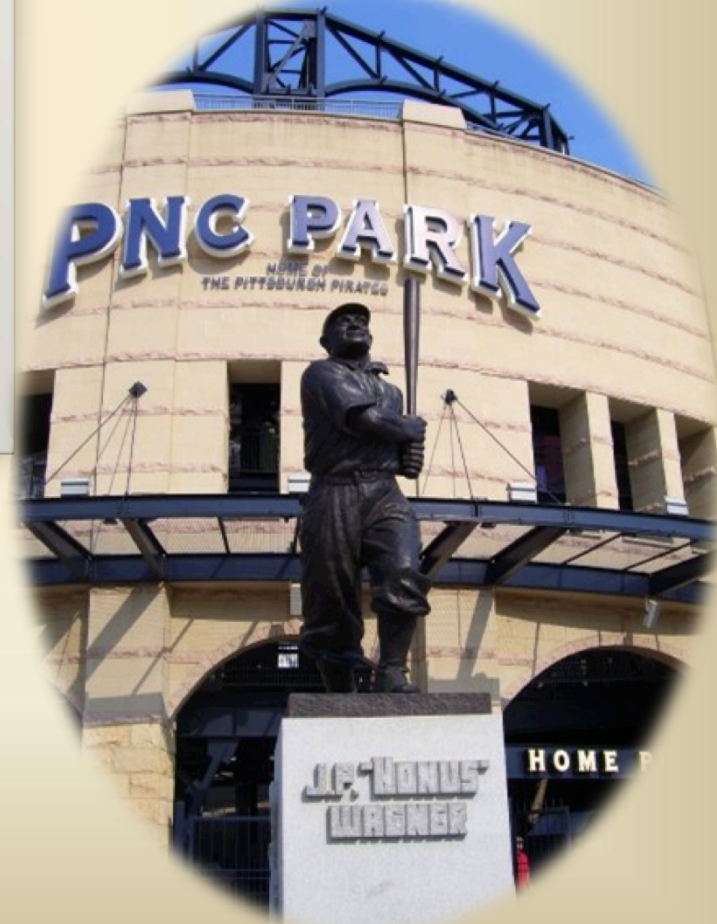


Pittsburgh Convention Center





Pittsburgh Pirates
Baseball Stadium



**Commercially generated food
scraps weigh approximately
480 to 1,300 lbs. per cubic yard**

Food Collection Containers





Commercial Kitchen

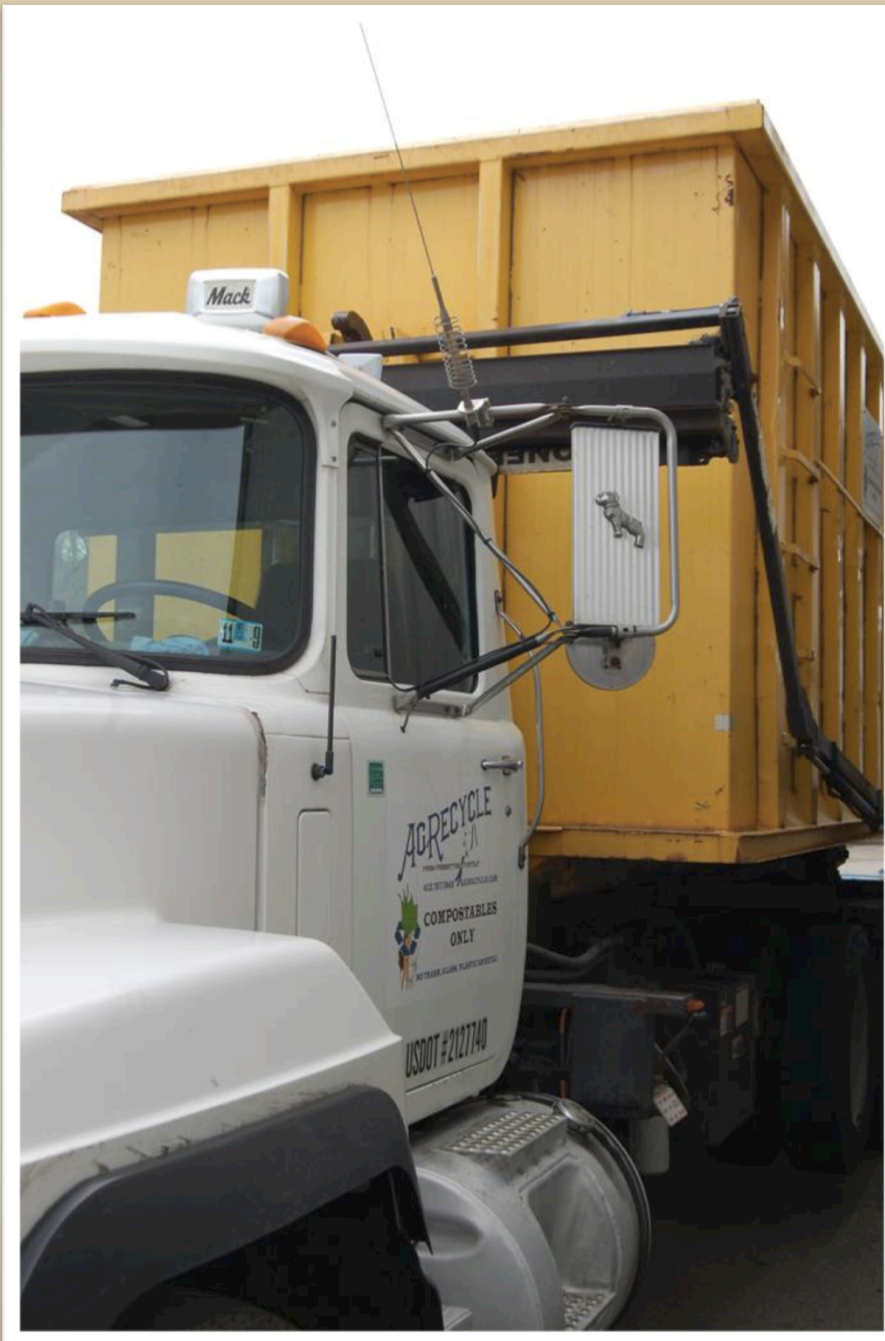


Compostable materials in commercial kitchens include much more than just food scraps.







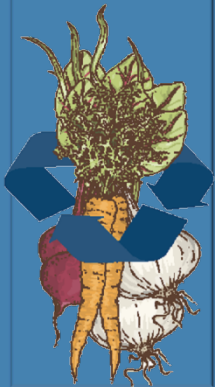
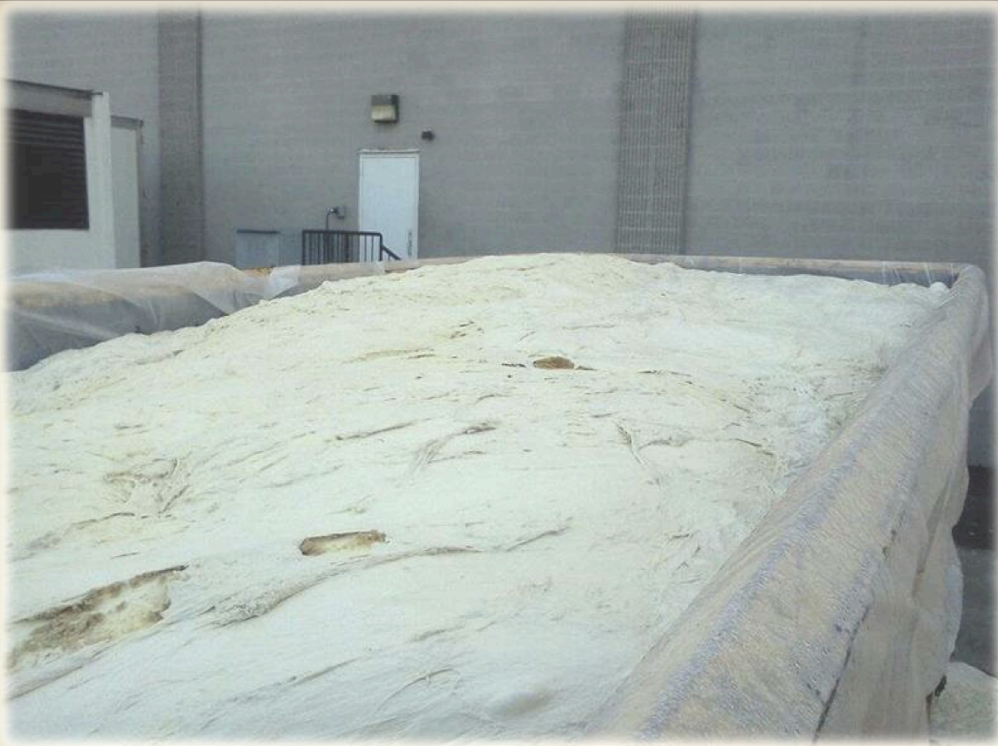


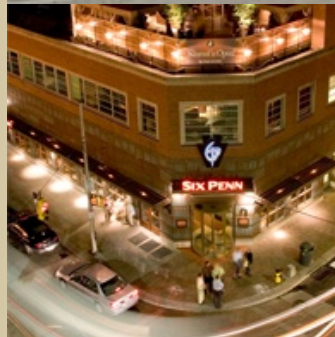
AGRECYCLE

COMPOSTABLES
ONLY

USDOT #2127740

Mack









gjordan@agrecycle.com

412-767-7645

www.AgRecycle.com